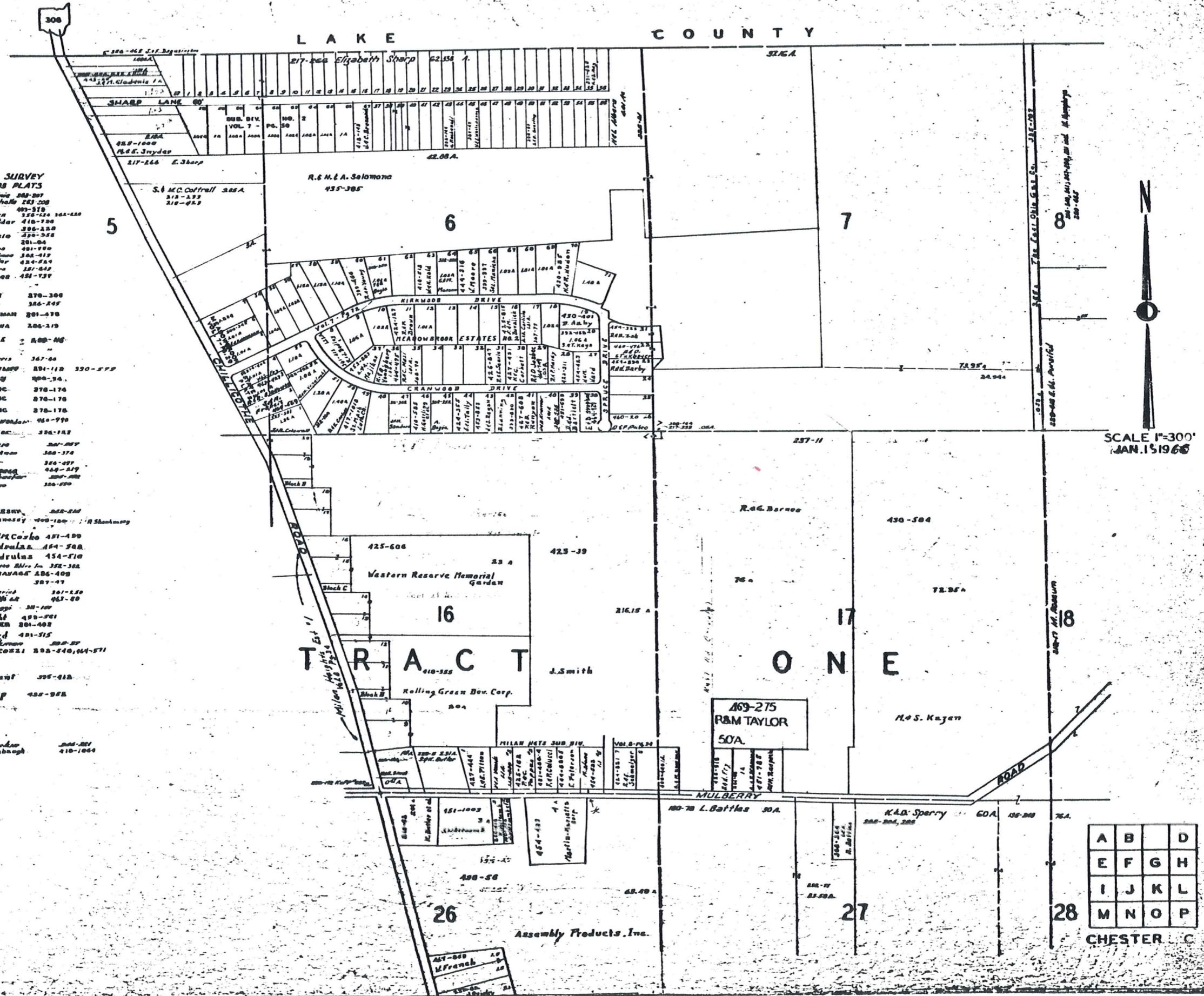


L A K E C O U N T Y

- E. SHARP SURVEY**
 Vol. 6 PG. 103 PLATS
- 1. S.M. Lippincott 282-287
 - 2. D.S. Cochran 283-288
 - 3. W.T. Saffo 289-294
 - 4. S.H. Jorner 295-300
 - 5. D.H. Holder 301-306
 - 6. F. Small 307-312
 - 7. J.L. Hester 313-318
 - 8. A. HLEBAR 319-324
 - 9. A.H. Phillips 325-330
 - 10. B.G. Kuhn 331-336
 - 11. W.H. Hester 337-342
 - 12. C. D. Sisson 343-348
 - 13. J.S. Hester 349-354
 - 14.
 - 15. S.A. ROBY 355-360
 - 16. J.E. Rife 361-366
 - 17. W.A. FREEMAN 367-372
 - 18. G. BRESNA 373-378
 - 19. R.E. BOZIC 379-384
 - 20. R.E. BOZIC 385-390
 - 21. H.C. Hester 391-396
 - 22. C.A. Hester 397-402
 - 23. W.C. Hester 403-408
 - 24. J.P. Hester 409-414
 - 25. W.C. Hester 415-420
 - 26. W.C. Hester 421-426
 - 27. W.C. Hester 427-432
 - 28. W.C. Hester 433-438
 - 29. W.C. Hester 439-444
 - 30. W.C. Hester 445-450
 - 31. W.C. Hester 451-456
 - 32. W.C. Hester 457-462
 - 33. W.C. Hester 463-468
 - 34. W.C. Hester 469-474
 - 35. W.C. Hester 475-480
 - 36. W.C. Hester 481-486
 - 37. W.C. Hester 487-492
 - 38. W.C. Hester 493-498
 - 39. W.C. Hester 499-504
 - 40. W.C. Hester 505-510
 - 41. W.C. Hester 511-516
 - 42. W.C. Hester 517-522
 - 43. W.C. Hester 523-528
 - 44. W.C. Hester 529-534
 - 45. W.C. Hester 535-540
 - 46. W.C. Hester 541-546
 - 47. W.C. Hester 547-552
 - 48. W.C. Hester 553-558
 - 49. W.C. Hester 559-564
 - 50. W.C. Hester 565-570
 - 51. W.C. Hester 571-576
 - 52. W.C. Hester 577-582
 - 53. W.C. Hester 583-588
 - 54. W.C. Hester 589-594
 - 55. W.C. Hester 595-600
 - 56. W.C. Hester 601-606
 - 57. W.C. Hester 607-612
 - 58. W.C. Hester 613-618
 - 59. W.C. Hester 619-624
 - 60. W.C. Hester 625-630
 - 61. W.C. Hester 631-636
 - 62. W.C. Hester 637-642
 - 63. W.C. Hester 643-648
 - 64. W.C. Hester 649-654
 - 65. W.C. Hester 655-660
 - 66. W.C. Hester 661-666
 - 67. W.C. Hester 667-672
 - 68. W.C. Hester 673-678
 - 69. W.C. Hester 679-684
 - 70. W.C. Hester 685-690
 - 71. W.C. Hester 691-696
 - 72. W.C. Hester 697-702
 - 73. W.C. Hester 703-708
 - 74. W.C. Hester 709-714
 - 75. W.C. Hester 715-720
 - 76. W.C. Hester 721-726
 - 77. W.C. Hester 727-732
 - 78. W.C. Hester 733-738
 - 79. W.C. Hester 739-744
 - 80. W.C. Hester 745-750
 - 81. W.C. Hester 751-756
 - 82. W.C. Hester 757-762
 - 83. W.C. Hester 763-768
 - 84. W.C. Hester 769-774
 - 85. W.C. Hester 775-780
 - 86. W.C. Hester 781-786
 - 87. W.C. Hester 787-792
 - 88. W.C. Hester 793-798
 - 89. W.C. Hester 799-804
 - 90. W.C. Hester 805-810
 - 91. W.C. Hester 811-816
 - 92. W.C. Hester 817-822
 - 93. W.C. Hester 823-828
 - 94. W.C. Hester 829-834
 - 95. W.C. Hester 835-840
 - 96. W.C. Hester 841-846
 - 97. W.C. Hester 847-852
 - 98. W.C. Hester 853-858
 - 99. W.C. Hester 859-864
 - 100. W.C. Hester 865-870



SCALE 1"=300'
 JAN. 15 1966

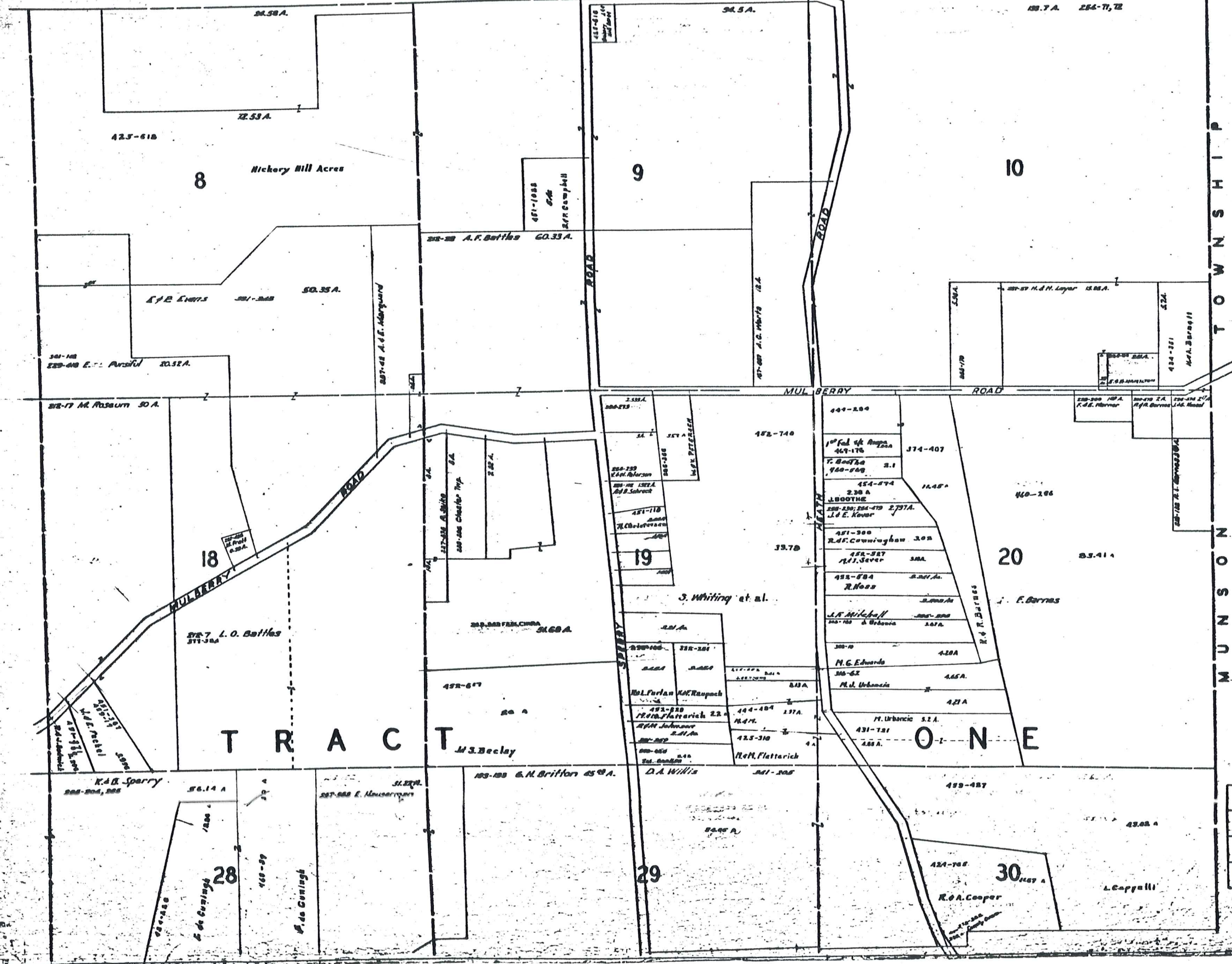
A	B	C	D
E	F	G	H
I	J	K	L
M	N	O	P

L A K E

G E M R O A D

C O U N T Y

C H A R D O N
T O W N S H I P



SCALE 1"=300'
JAN. 1, 1966

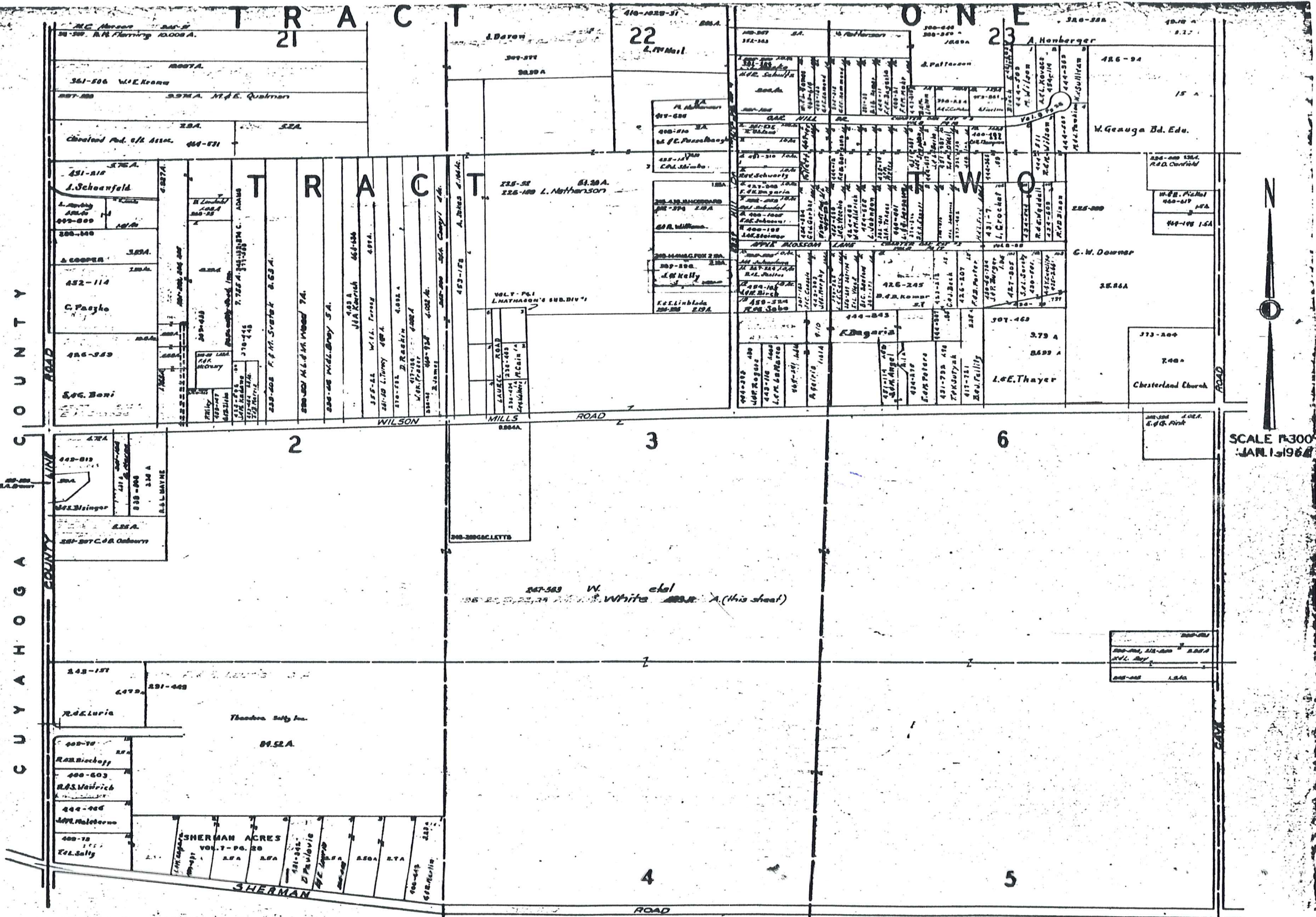
T O W N S H I P
M U N I C I P A L I T Y

T R A C T

O N E

A	B	C
E	F	G
I	J	K
M	N	O

C H E S T E R



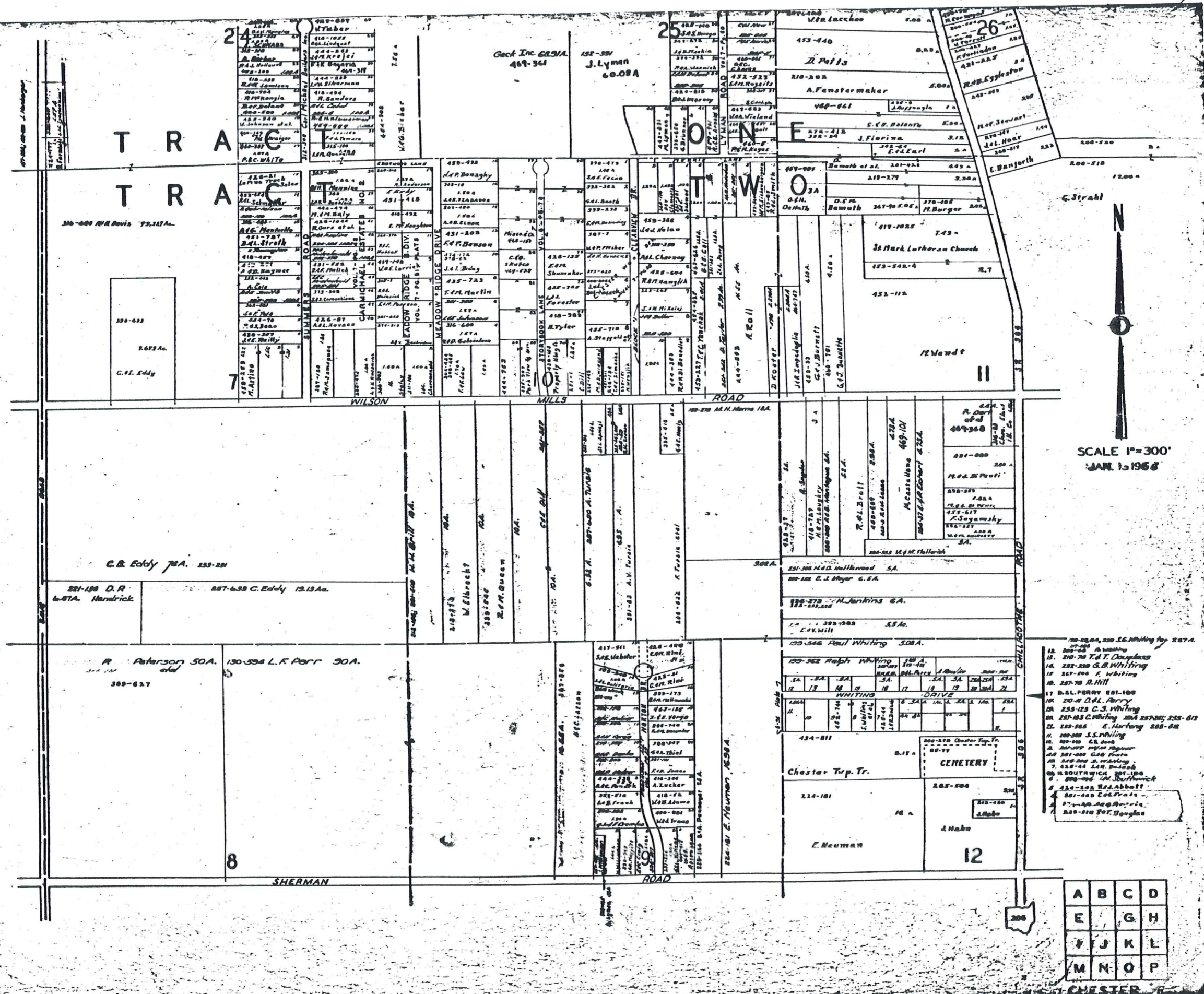
CHESTER COUNTY OHIO



SCALE 1"=300'
 JAN. 1, 1964

A	B	C	D
E	F	G	H
I	J	K	L
M	N	O	P

CHESTER 5



SCALE 1"=300'
JAN 1, 1968

A	B	C	D
E	F	G	H
I	J	K	L
M	N	O	P

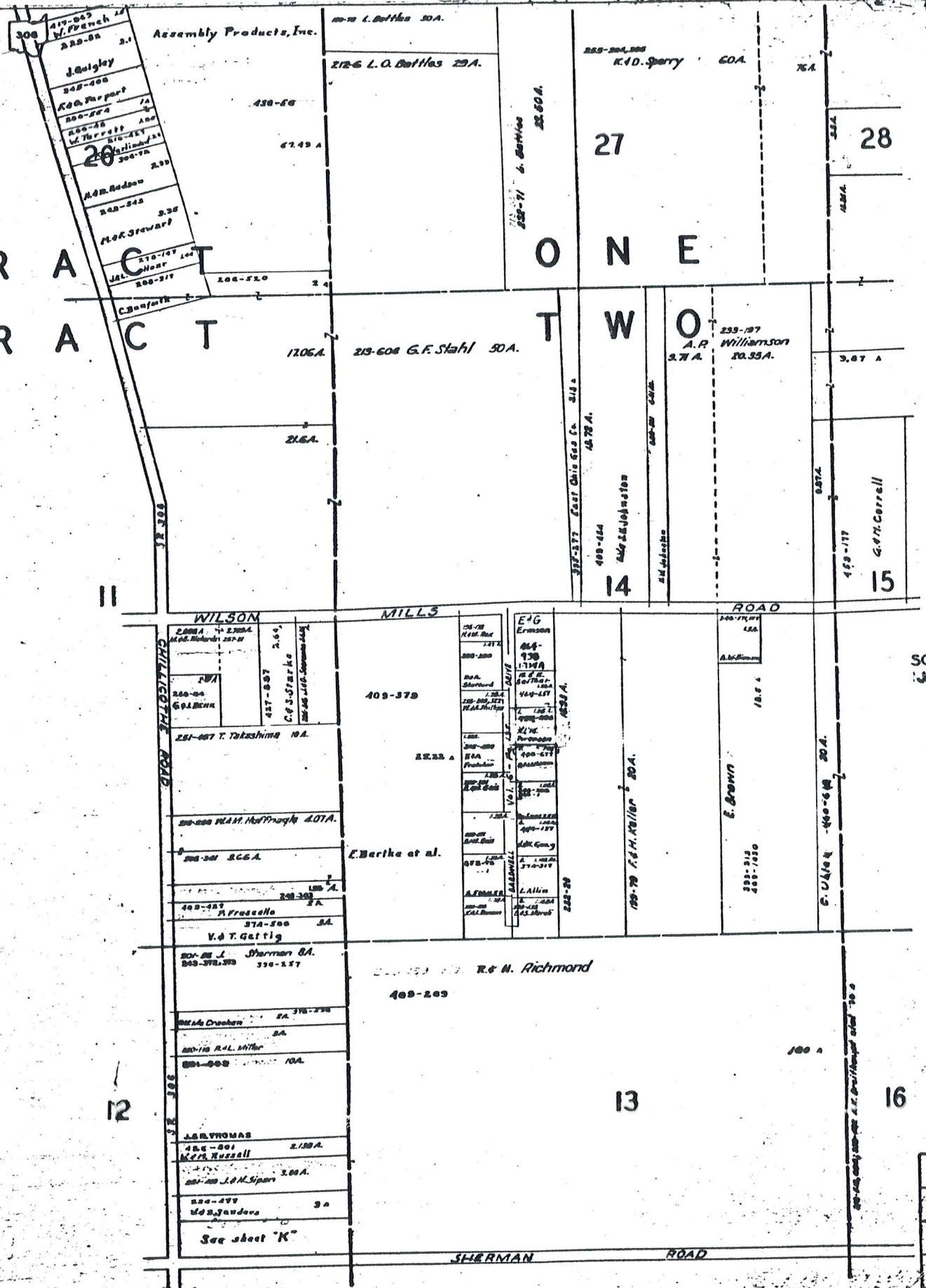
CHESTER

- 12. 200-200 S. Whiting
- 13. 200-200 S. Whiting
- 14. 200-200 S. Whiting
- 15. 200-200 S. Whiting
- 16. 200-200 S. Whiting
- 17. 200-200 S. Whiting
- 18. 200-200 S. Whiting
- 19. 200-200 S. Whiting
- 20. 200-200 S. Whiting
- 21. 200-200 S. Whiting
- 22. 200-200 S. Whiting
- 23. 200-200 S. Whiting
- 24. 200-200 S. Whiting
- 25. 200-200 S. Whiting
- 26. 200-200 S. Whiting
- 27. 200-200 S. Whiting
- 28. 200-200 S. Whiting
- 29. 200-200 S. Whiting
- 30. 200-200 S. Whiting
- 31. 200-200 S. Whiting
- 32. 200-200 S. Whiting

T R A C T
T R A C T

O N E

T W O

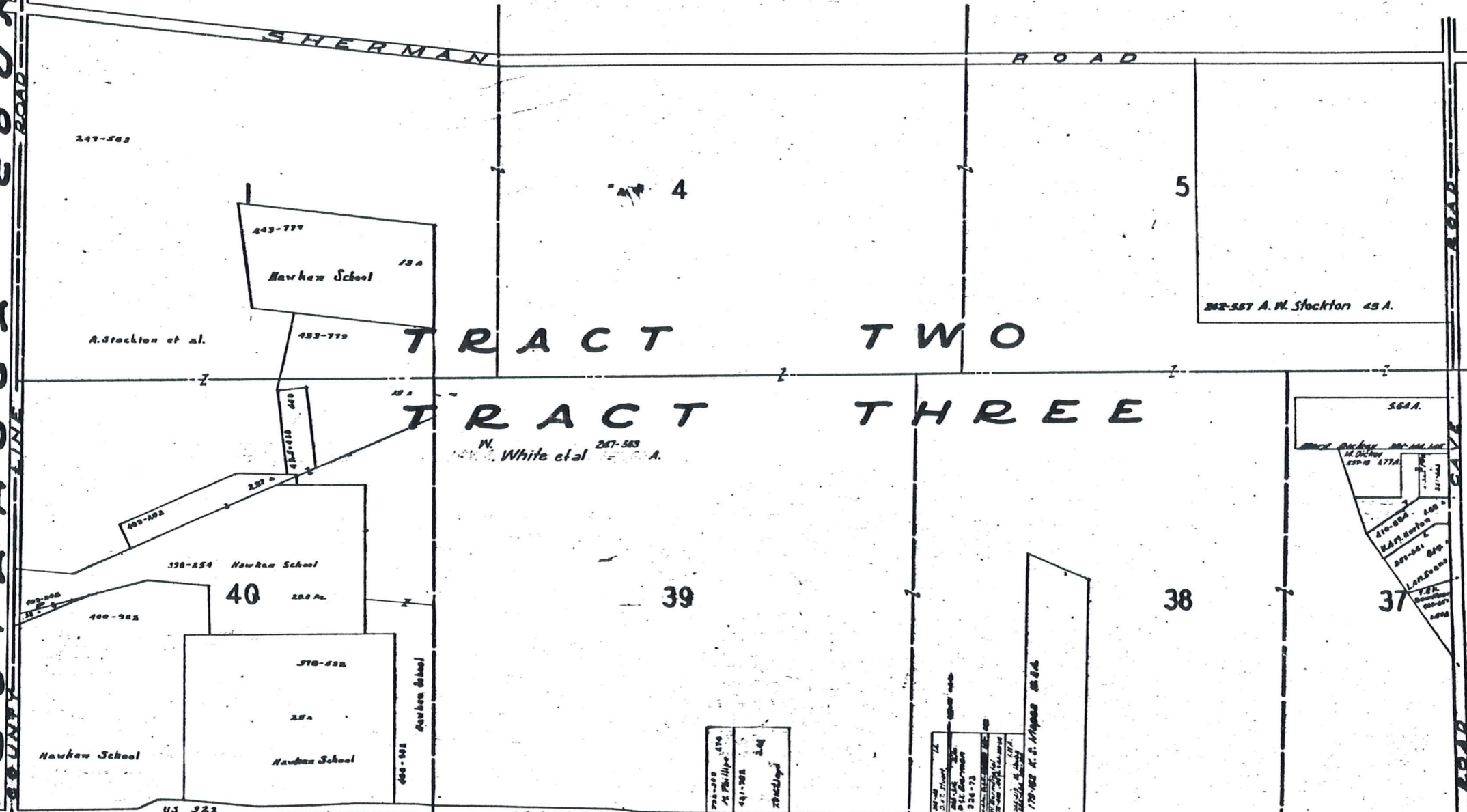


SCALE 1"=300'
JAN. 1, 1968

A	B	C	D
E	F	G	H
I	J	K	L
M	N	O	

CHESTER

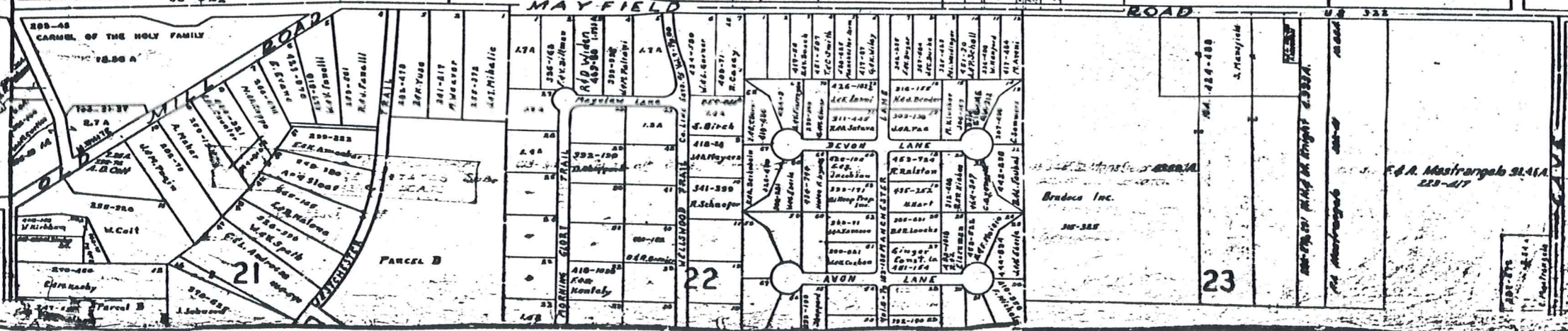
CUYAHOGA COUNTY



SCALE 1"=300'
JAN. 1, 1968

A	B	C	D
E	F	G	H
	J	K	L
M	N	O	P

CHESTER I

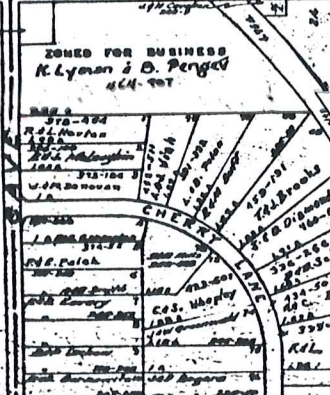
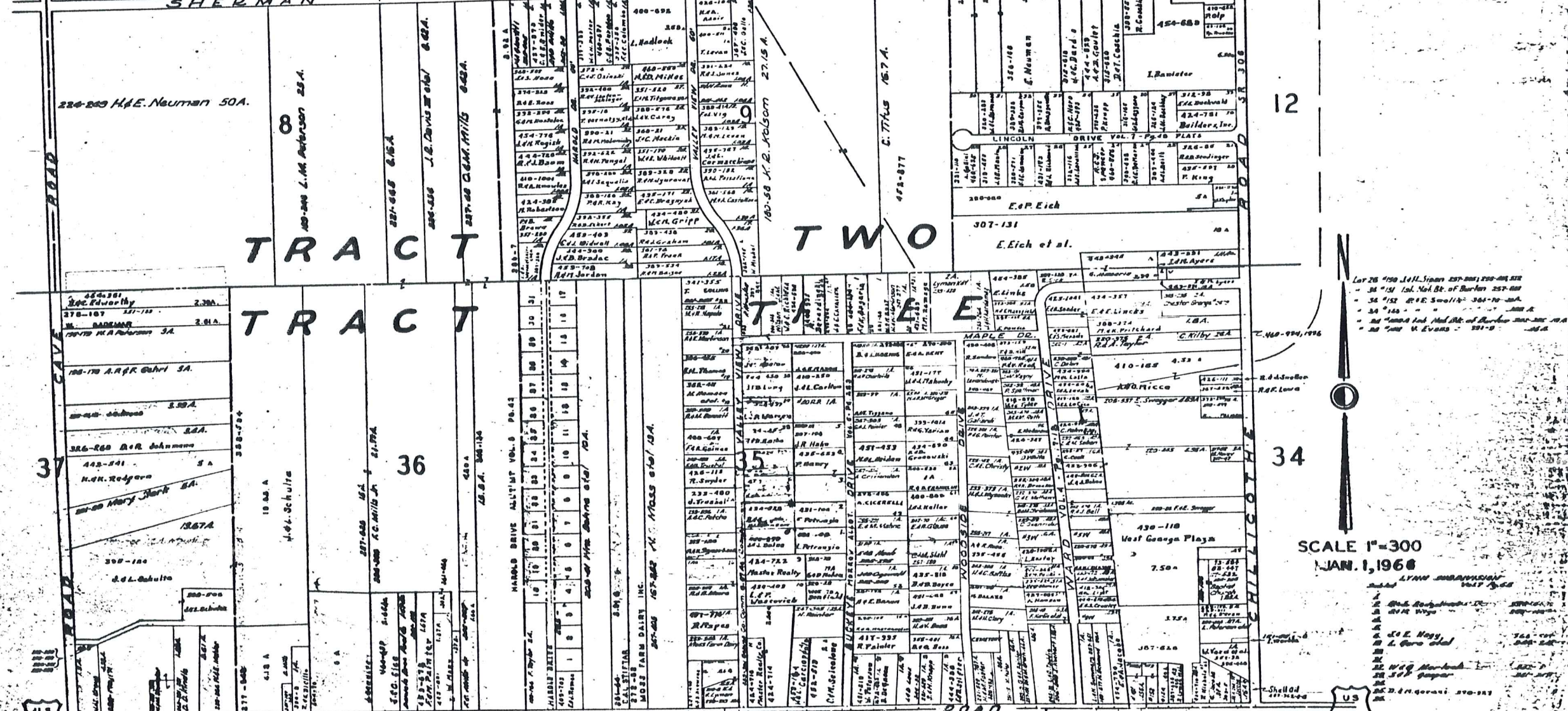


Lot	Owner	Address
1	M.C. Smith	381-170
2	A. Decilio	381-171
3	C.E. Mandell	418-781
4	F.A. Bannan	387-230
5	H.S. Clark	428-123
6	W.K. Kurchavsky	426-887
7	J.C. Roach	429-23
8	A.M. Olson	424-888
9	L.M. Sawicki	478-23
10	J. Dorcas	427-950
11	A.M. Smith	318-18
12	C.H. Becker	421-687
13	L.P. Fife	427-28
14	F.D. Mason	429-431
15	R. Taylor	421-728
16	H.S. Henderson	429-124
17	H.C. Smith	385-72
18	E. Neuman	428-714
19	L.J. Brown	384-1871
20	F. DeWanda	423-223
21	A.A. Guntz	420-224

R.R. - BUNTON SUBD (Not Recorded)
 Containing 228
 Acres

Map of 228
 Acres from Attachment
 (Utility Near to Backing)

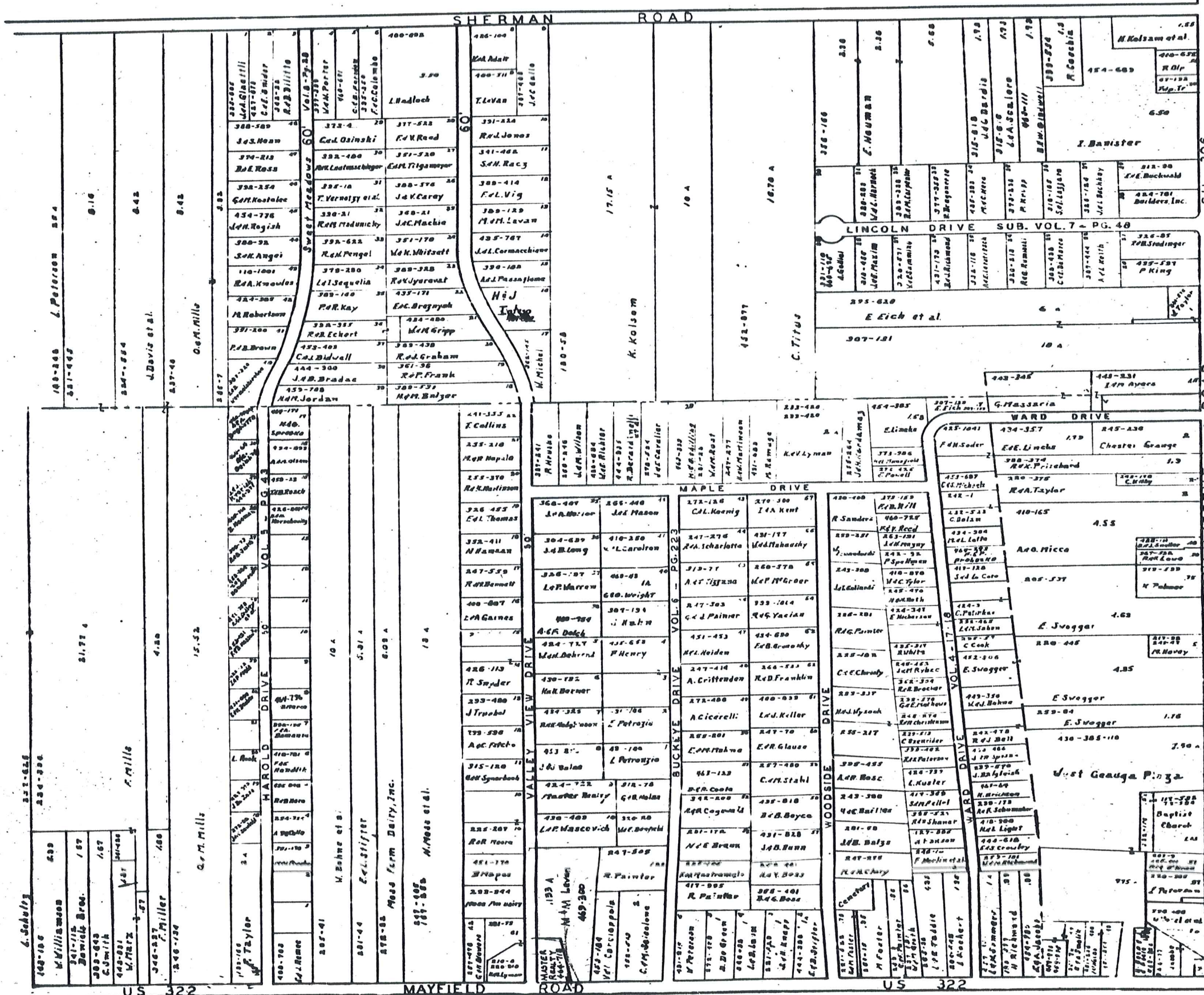
W. WARD SUBD (Not Recorded)
 1. J.A. July 22-50
 2. J.A. July 22-50
 3. J.A. July 22-50
 4. J.A. July 22-50
 5. J.A. July 22-50
 6. J.A. July 22-50
 7. J.A. July 22-50
 8. J.A. July 22-50
 9. J.A. July 22-50
 10. J.A. July 22-50



A	B	C	D
E	F	G	H
I	J	K	L
M	N	O	P

SCALE 1"=300
 JAN. 1, 1968

INDEX
 1. J.A. July 22-50
 2. J.A. July 22-50
 3. J.A. July 22-50
 4. J.A. July 22-50
 5. J.A. July 22-50
 6. J.A. July 22-50
 7. J.A. July 22-50
 8. J.A. July 22-50
 9. J.A. July 22-50
 10. J.A. July 22-50



SHERMAN ROAD

MAYFIELD ROAD

CHILICOTHE ROAD

6. Schulz
 499-106
 M. Williams
 341-115
 Bawick Bros.
 303-693
 C. Smith
 449-991
 W. Metz
 346-337
 F. Miller
 246-124

G.M. Mills
 15.52
 4.88

HAROLD DRIVE
 2.4
 2.4

VALLEY VIEW DRIVE
 10.4
 5.31.4
 6.08.4
 18.4

BUCKEYE DRIVE
 10.4
 5.31.4
 6.08.4
 18.4

WOODSIDE DRIVE
 10.4
 5.31.4
 6.08.4
 18.4

WARD DRIVE
 10.4
 5.31.4
 6.08.4
 18.4

MAPLE DRIVE
 10.4
 5.31.4
 6.08.4
 18.4

SWEET MEADOWS
 10.4
 5.31.4
 6.08.4
 18.4

17.15 A
 10 A
 16.70 A

17.15 A
 10 A
 16.70 A

17.15 A
 10 A
 16.70 A

17.15 A
 10 A
 16.70 A

17.15 A
 10 A
 16.70 A

17.15 A
 10 A
 16.70 A

17.15 A
 10 A
 16.70 A

17.15 A
 10 A
 16.70 A

17.15 A
 10 A
 16.70 A

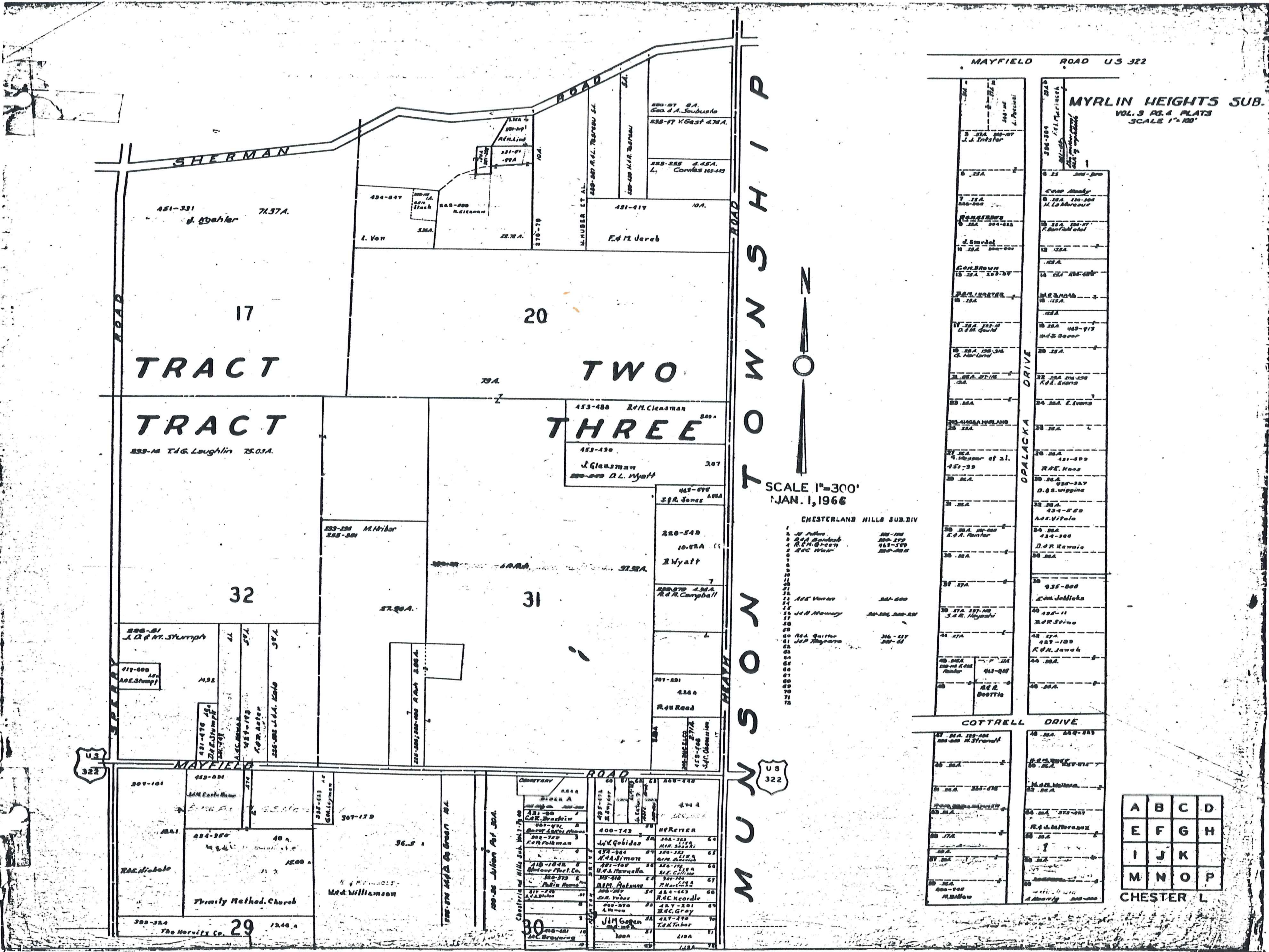
17.15 A
 10 A
 16.70 A

17.15 A
 10 A
 16.70 A

SCALE 1"=200'
 1-1-1966

US 322

US 322



MAYFIELD ROAD U.S. 322

MYRLIN HEIGHTS SUB.
VOL. 3 PG. 4 PLATS
SCALE 1"=100'

M U N I C I P A L T O W N S H I P



SCALE 1"=300'
JAN. 1, 1966

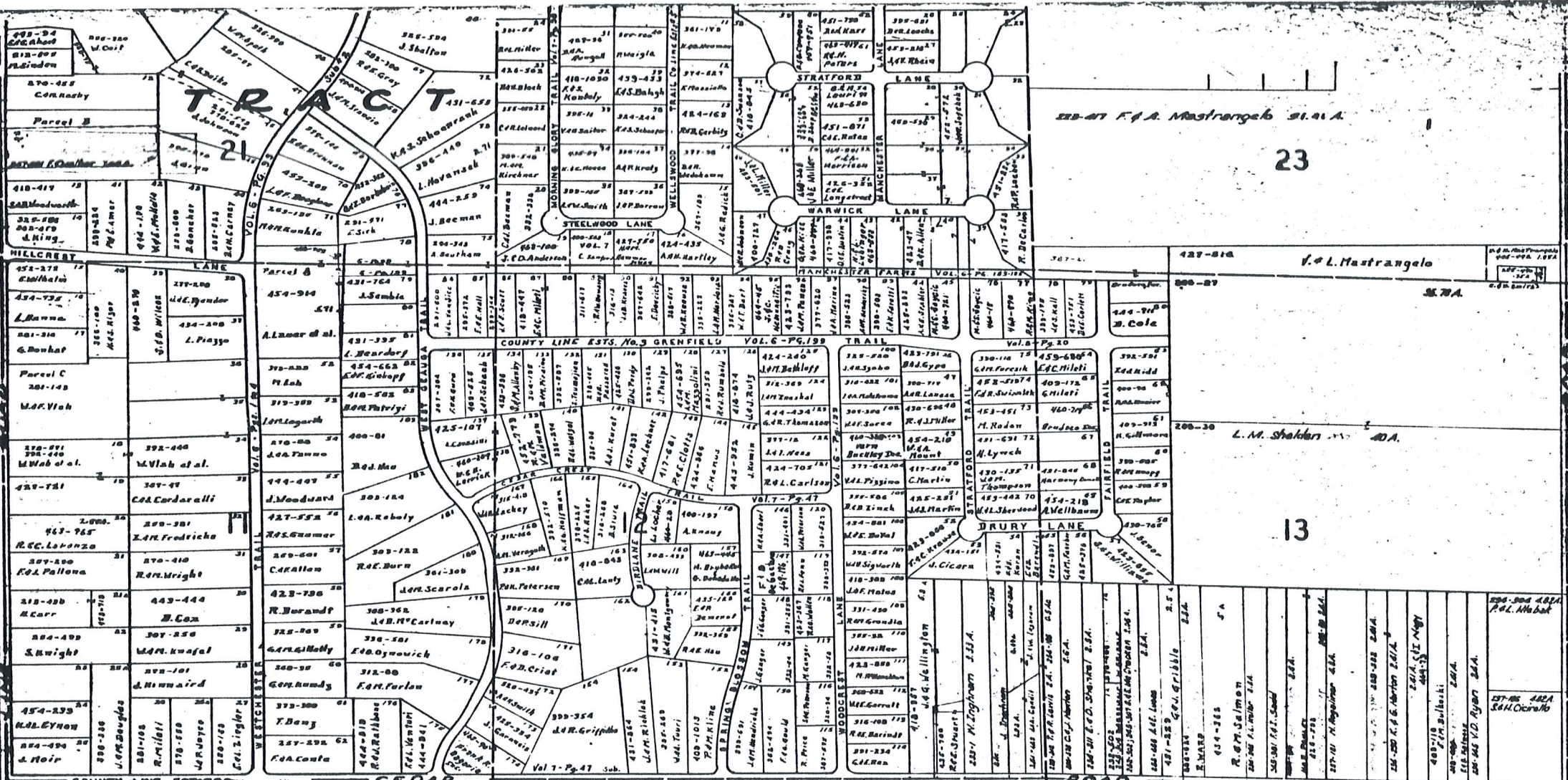
- CHESTERLAND HILLS SUB. DIV
- 1 J. P. Adams
 - 2 J. P. Adams
 - 3 J. P. Adams
 - 4 J. P. Adams
 - 5 J. P. Adams
 - 6 J. P. Adams
 - 7 J. P. Adams
 - 8 J. P. Adams
 - 9 J. P. Adams
 - 10 J. P. Adams
 - 11 J. P. Adams
 - 12 J. P. Adams
 - 13 J. P. Adams
 - 14 J. P. Adams
 - 15 J. P. Adams
 - 16 J. P. Adams
 - 17 J. P. Adams
 - 18 J. P. Adams
 - 19 J. P. Adams
 - 20 J. P. Adams
 - 21 J. P. Adams
 - 22 J. P. Adams
 - 23 J. P. Adams
 - 24 J. P. Adams
 - 25 J. P. Adams
 - 26 J. P. Adams
 - 27 J. P. Adams
 - 28 J. P. Adams
 - 29 J. P. Adams
 - 30 J. P. Adams
 - 31 J. P. Adams
 - 32 J. P. Adams
 - 33 J. P. Adams
 - 34 J. P. Adams
 - 35 J. P. Adams
 - 36 J. P. Adams
 - 37 J. P. Adams
 - 38 J. P. Adams
 - 39 J. P. Adams
 - 40 J. P. Adams
 - 41 J. P. Adams
 - 42 J. P. Adams
 - 43 J. P. Adams
 - 44 J. P. Adams
 - 45 J. P. Adams
 - 46 J. P. Adams
 - 47 J. P. Adams
 - 48 J. P. Adams
 - 49 J. P. Adams
 - 50 J. P. Adams
 - 51 J. P. Adams
 - 52 J. P. Adams
 - 53 J. P. Adams
 - 54 J. P. Adams
 - 55 J. P. Adams
 - 56 J. P. Adams
 - 57 J. P. Adams
 - 58 J. P. Adams
 - 59 J. P. Adams
 - 60 J. P. Adams
 - 61 J. P. Adams
 - 62 J. P. Adams
 - 63 J. P. Adams
 - 64 J. P. Adams
 - 65 J. P. Adams
 - 66 J. P. Adams
 - 67 J. P. Adams
 - 68 J. P. Adams
 - 69 J. P. Adams
 - 70 J. P. Adams
 - 71 J. P. Adams
 - 72 J. P. Adams

1	2	3	4	5	6	7	8	9	10	11	12	13	14	15	16	17	18	19	20	21	22	23	24	25	26	27	28	29	30	31	32	33	34	35	36	37	38	39	40	41	42	43	44	45	46	47	48	49	50	51	52	53	54	55	56	57	58	59	60	61	62	63	64	65	66	67	68	69	70	71	72
---	---	---	---	---	---	---	---	---	----	----	----	----	----	----	----	----	----	----	----	----	----	----	----	----	----	----	----	----	----	----	----	----	----	----	----	----	----	----	----	----	----	----	----	----	----	----	----	----	----	----	----	----	----	----	----	----	----	----	----	----	----	----	----	----	----	----	----	----	----	----	----

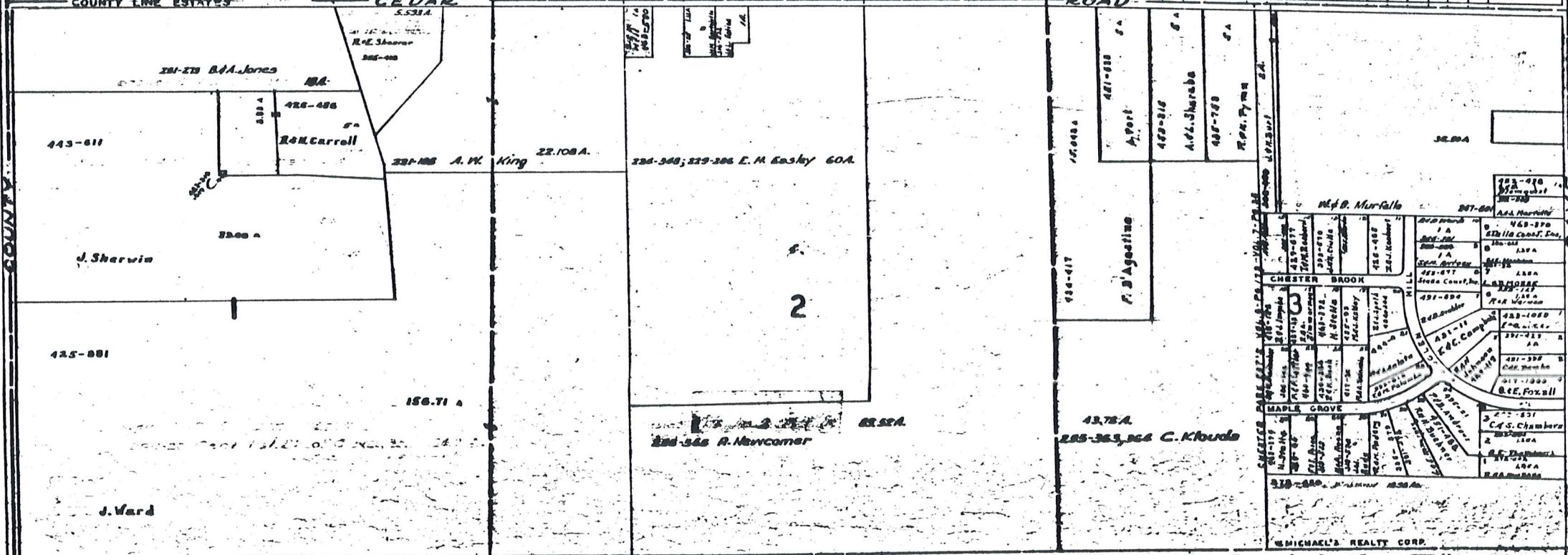
A	B	C	D
E	F	G	H
I	J	K	L
M	N	O	P

CHESTER L

CUYAHOGA COUNTY



SCALE 1"=300'
JAN. 1, 1962



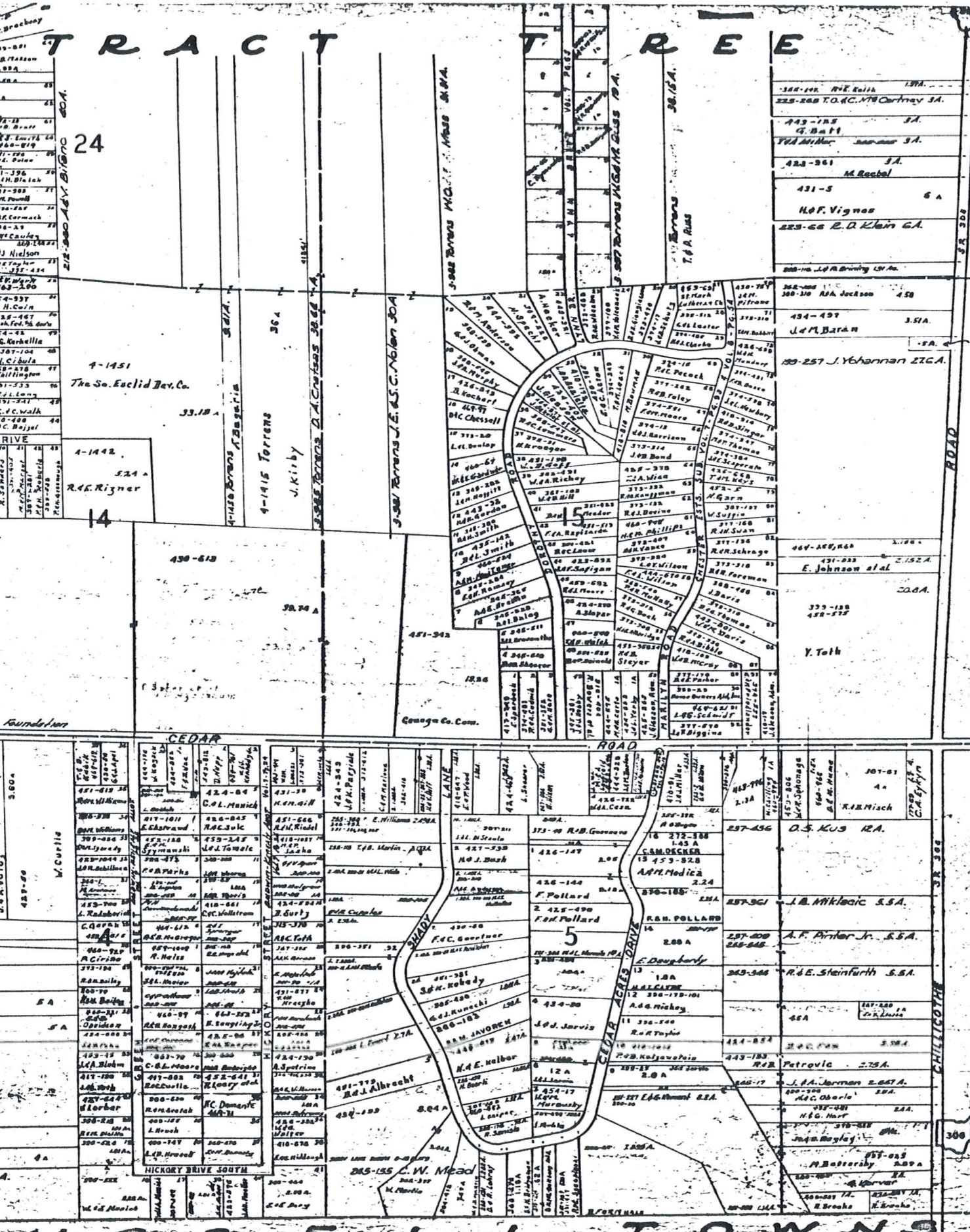
RUSSELL TOWNSHIP

ABCD
EFGH
IJKL
NOP

MICHAEL'S REALTY CORP.

TRACT TREE

127-130	127-130	127-130
127-131	127-131	127-131
127-132	127-132	127-132
127-133	127-133	127-133
127-134	127-134	127-134
127-135	127-135	127-135
127-136	127-136	127-136
127-137	127-137	127-137
127-138	127-138	127-138
127-139	127-139	127-139
127-140	127-140	127-140
127-141	127-141	127-141
127-142	127-142	127-142
127-143	127-143	127-143
127-144	127-144	127-144
127-145	127-145	127-145
127-146	127-146	127-146
127-147	127-147	127-147
127-148	127-148	127-148
127-149	127-149	127-149
127-150	127-150	127-150
127-151	127-151	127-151
127-152	127-152	127-152
127-153	127-153	127-153
127-154	127-154	127-154
127-155	127-155	127-155
127-156	127-156	127-156
127-157	127-157	127-157
127-158	127-158	127-158
127-159	127-159	127-159
127-160	127-160	127-160
127-161	127-161	127-161
127-162	127-162	127-162
127-163	127-163	127-163
127-164	127-164	127-164
127-165	127-165	127-165
127-166	127-166	127-166
127-167	127-167	127-167
127-168	127-168	127-168
127-169	127-169	127-169
127-170	127-170	127-170
127-171	127-171	127-171
127-172	127-172	127-172
127-173	127-173	127-173
127-174	127-174	127-174
127-175	127-175	127-175
127-176	127-176	127-176
127-177	127-177	127-177
127-178	127-178	127-178
127-179	127-179	127-179
127-180	127-180	127-180
127-181	127-181	127-181
127-182	127-182	127-182
127-183	127-183	127-183
127-184	127-184	127-184
127-185	127-185	127-185
127-186	127-186	127-186
127-187	127-187	127-187
127-188	127-188	127-188
127-189	127-189	127-189
127-190	127-190	127-190
127-191	127-191	127-191
127-192	127-192	127-192
127-193	127-193	127-193
127-194	127-194	127-194
127-195	127-195	127-195
127-196	127-196	127-196
127-197	127-197	127-197
127-198	127-198	127-198
127-199	127-199	127-199
127-200	127-200	127-200



127-1	127-1
127-2	127-2
127-3	127-3
127-4	127-4
127-5	127-5
127-6	127-6
127-7	127-7
127-8	127-8
127-9	127-9
127-10	127-10
127-11	127-11
127-12	127-12
127-13	127-13
127-14	127-14
127-15	127-15
127-16	127-16
127-17	127-17
127-18	127-18
127-19	127-19
127-20	127-20
127-21	127-21
127-22	127-22
127-23	127-23
127-24	127-24
127-25	127-25
127-26	127-26
127-27	127-27
127-28	127-28
127-29	127-29
127-30	127-30
127-31	127-31
127-32	127-32
127-33	127-33
127-34	127-34
127-35	127-35
127-36	127-36
127-37	127-37
127-38	127-38
127-39	127-39
127-40	127-40
127-41	127-41
127-42	127-42
127-43	127-43
127-44	127-44
127-45	127-45
127-46	127-46
127-47	127-47
127-48	127-48
127-49	127-49
127-50	127-50
127-51	127-51
127-52	127-52
127-53	127-53
127-54	127-54
127-55	127-55
127-56	127-56
127-57	127-57
127-58	127-58
127-59	127-59
127-60	127-60
127-61	127-61
127-62	127-62
127-63	127-63
127-64	127-64
127-65	127-65
127-66	127-66
127-67	127-67
127-68	127-68
127-69	127-69
127-70	127-70
127-71	127-71
127-72	127-72
127-73	127-73
127-74	127-74
127-75	127-75
127-76	127-76
127-77	127-77
127-78	127-78
127-79	127-79
127-80	127-80
127-81	127-81
127-82	127-82
127-83	127-83
127-84	127-84
127-85	127-85
127-86	127-86
127-87	127-87
127-88	127-88
127-89	127-89
127-90	127-90
127-91	127-91
127-92	127-92
127-93	127-93
127-94	127-94
127-95	127-95
127-96	127-96
127-97	127-97
127-98	127-98
127-99	127-99
127-100	127-100

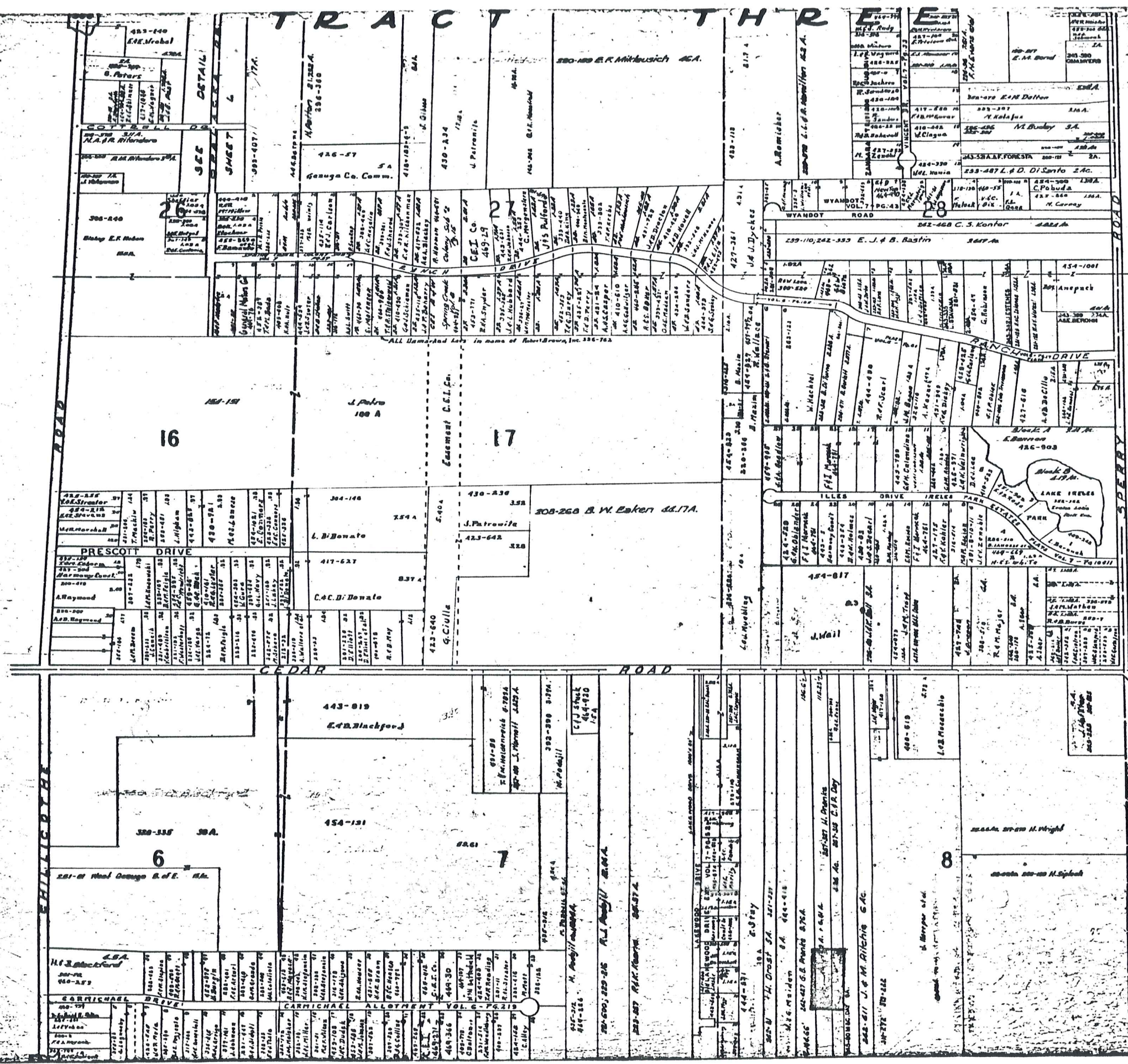
SCALE F-300
MAR. 1, 1966

A	B	C	D
E	F	G	H
I	J	K	L
M	O	P	

GNESTE

BUSSELL TOWNSHIP

TRACT THREE



SCALE 1" = 300'
JAN. 1, 1966

SMOOTHER SURVEY No. 6 of 49 Pats
S.L. No. 1000
S. No. 1001
S. No. 1002
S. No. 1003
S. No. 1004
S. No. 1005
S. No. 1006
S. No. 1007
S. No. 1008
S. No. 1009
S. No. 1010

A	B	C	D
E	F	G	H
I	J	K	L
M	N	O	P

CHESTER

